

COPYRIGHT © Hangzhou EZVIZ Software Co., Ltd. ALL RIGHTS RESERVED.

Any and all information, including, among others, wordings, pictures, graphs are the properties of Hangzhou EZVIZ Software Co., Ltd. (hereinafter referred to as “EZVIZ”). This user manual (hereinafter referred to as “the Manual”) cannot be reproduced, changed, translated, or distributed, partially or wholly, by any means, without the prior written permission of EZVIZ. Unless otherwise stipulated, EZVIZ does not make any warranties, guarantees or representations, express or implied, regarding to the Manual.


### **About this Manual**

The Manual includes instructions for using and managing the product. Pictures, charts, images and all other information hereinafter are for description and explanation only. The information contained in the Manual is subject to change, without notice, due to firmware updates or other reasons. Please find the latest version in the [ezviz™ website \(http://www.ezviz.com\)](http://www.ezviz.com).

### **Revision Record**

New release – January 2023

### **Trademarks Acknowledgement**

**EZVIZ™**, ™, and other EZVIZ’s trademarks and logos are the properties of EZVIZ in various jurisdictions. Other trademarks and logos mentioned below are the properties of their respective owners.

### **Legal Disclaimer**

TO THE MAXIMUM EXTENT PERMITTED BY APPLICABLE LAW, THE PRODUCT DESCRIBED, WITH ITS HARDWARE, SOFTWARE AND FIRMWARE, IS PROVIDED “AS IS”, WITH ALL FAULTS AND ERRORS, AND EZVIZ MAKES NO WARRANTIES, EXPRESS OR IMPLIED, INCLUDING WITHOUT LIMITATION, MERCHANTABILITY, SATISFACTORY QUALITY, FITNESS FOR A PARTICULAR PURPOSE, AND NON-INFRINGEMENT OF THIRD PARTY. IN NO EVENT WILL EZVIZ, ITS DIRECTORS, OFFICERS, EMPLOYEES, OR AGENTS BE LIABLE TO YOU FOR ANY SPECIAL, CONSEQUENTIAL, INCIDENTAL, OR INDIRECT DAMAGES, INCLUDING, AMONG OTHERS, DAMAGES FOR LOSS OF BUSINESS PROFITS, BUSINESS INTERRUPTION, OR LOSS OF DATA OR DOCUMENTATION, IN CONNECTION WITH THE USE OF THIS PRODUCT, EVEN IF EZVIZ HAS BEEN ADVISED OF THE POSSIBILITY OF SUCH DAMAGES.

TO THE MAXIMUM EXTENT PERMITTED BY APPLICABLE LAW, IN NO EVENT SHALL EZVIZ’S TOTAL LIABILITY FOR ALL DAMAGES EXCEED THE ORIGINAL PURCHASE PRICE OF THE PRODUCT.

EZVIZ DOES NOT UNDERTAKE ANY LIABILITY FOR PERSONAL INJURY OR PROPERTY DAMAGE AS THE RESULT OF PRODUCT INTERRUPTION OR SERVICE TERMINATION CAUSED BY: A) IMPROPER INSTALLATION OR USAGE OTHER THAN AS REQUESTED; B) THE PROTECTION OF NATIONAL OR PUBLIC INTERESTS; C) FORCE MAJEURE; D) YOURSELF OR THE THIRD PARTY, INCLUDING WITHOUT LIMITATION, USING ANY THIRD PARTY’S PRODUCTS, SOFTWARE, APPLICATIONS, AND AMONG OTHERS.

REGARDING TO THE PRODUCT WITH INTERNET ACCESS, THE USE OF PRODUCT SHALL BE WHOLLY AT YOUR OWN RISKS. EZVIZ SHALL NOT TAKE ANY RESPONSIBILITIES FOR ABNORMAL OPERATION, PRIVACY LEAKAGE OR OTHER DAMAGES RESULTING FROM CYBER ATTACK, HACKER ATTACK, VIRUS INSPECTION, OR OTHER INTERNET SECURITY RISKS; HOWEVER, EZVIZ WILL PROVIDE TIMELY TECHNICAL SUPPORT IF REQUIRED. SURVEILLANCE LAWS AND DATA PROTECTION LAWS VARY BY JURISDICTION. PLEASE CHECK ALL RELEVANT LAWS IN YOUR JURISDICTION BEFORE USING THIS PRODUCT IN ORDER TO ENSURE THAT YOUR USE CONFORMS TO THE APPLICABLE LAW. EZVIZ SHALL NOT BE LIABLE IN THE EVENT THAT THIS PRODUCT IS USED WITH ILLEGITIMATE PURPOSES.


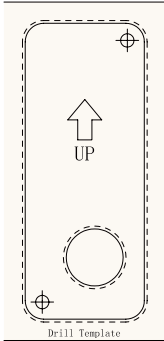







IN THE EVENT OF ANY CONFLICTS BETWEEN THE ABOVE AND THE APPLICABLE LAW, THE LATTER PREVAILS.

# Table of Contents

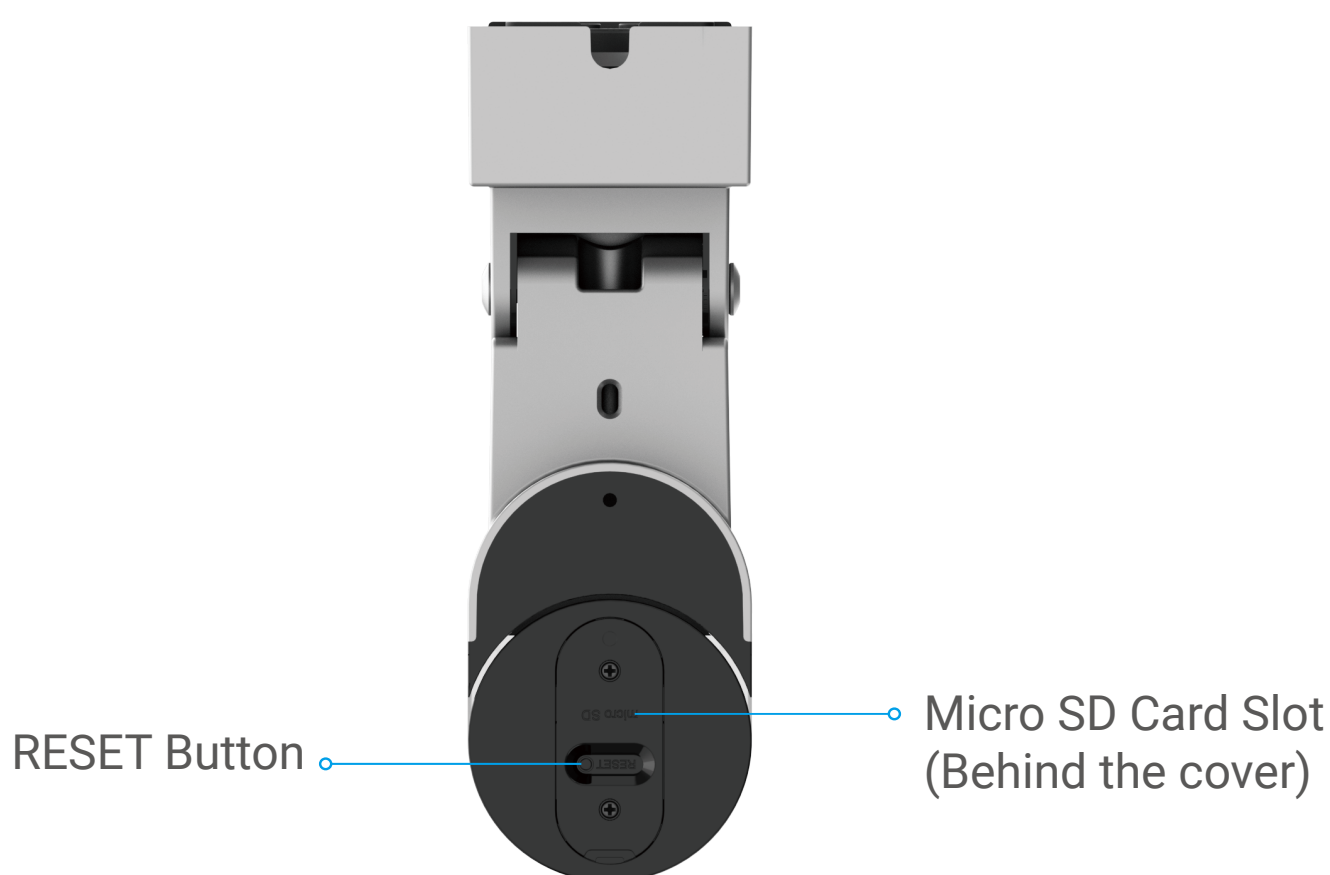
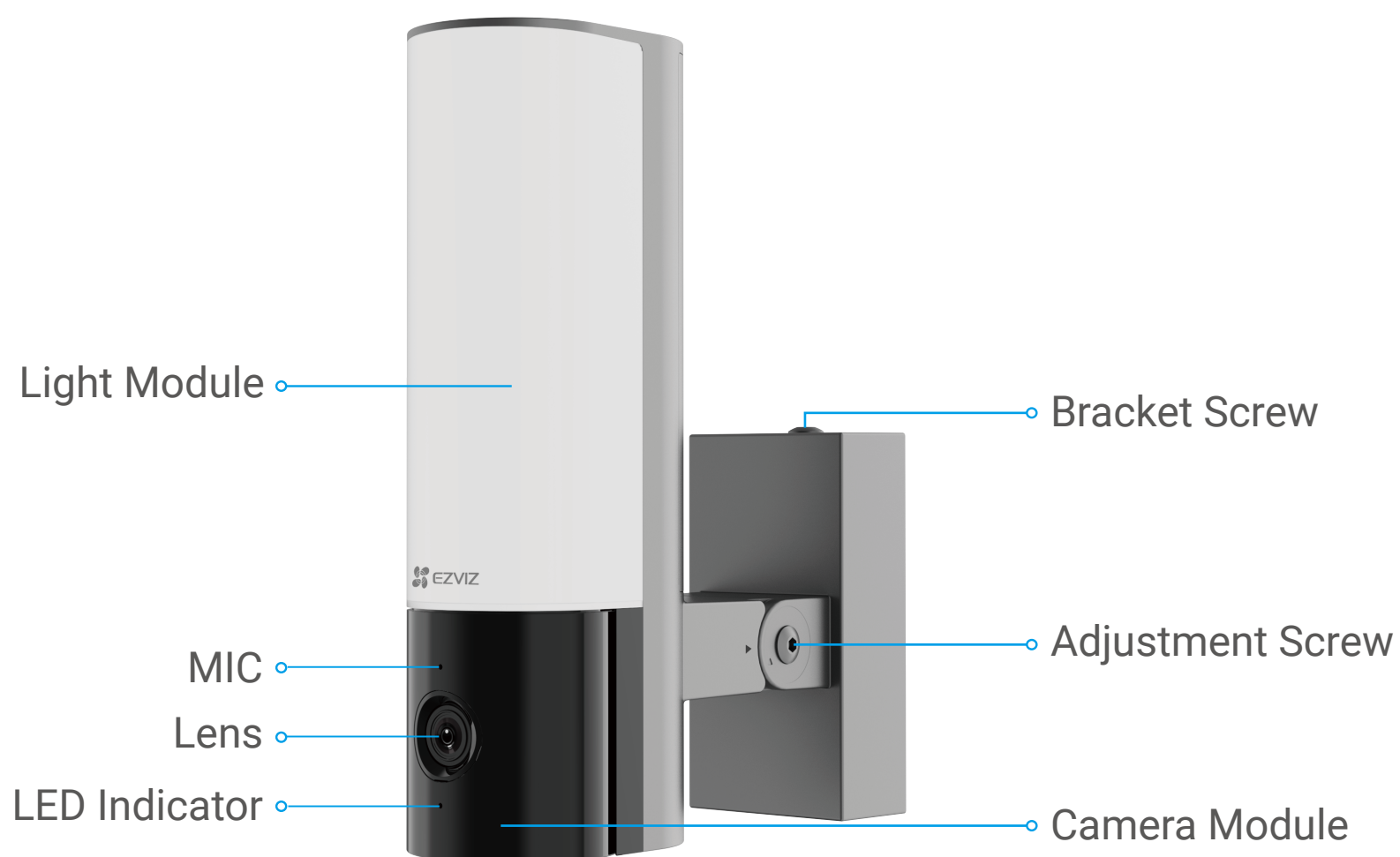
<b>Package Contents</b> .....	<b>1</b>
<b>Basics</b> .....	<b>2</b>
<b>Setup</b> .....	<b>3</b>
1. Get the EZVIZ App.....	3
2. Shut off the Electricity at the Breaker.....	4
3. Install Micro SD Card (Optional).....	4
4. Install the Wall Bracket .....	5
5. Connect the Wires.....	6
6. Install the Camera to the Wall Bracket.....	7
7. Adjust Camera Angle. ....	8
8. Restore Power at the Breaker .....	8
9. Add camera to EZVIZ App.....	9
<b>View Your Device</b> .....	<b>10</b>
1. Live View .....	10
2. Settings.....	11
<b>EZVIZ Connect</b> .....	<b>12</b>
1. Use Amazon Alexa .....	12
2. Use Google Assistant.....	13
<b>Initiatives on the Use of Video Products</b> .....	<b>14</b>
<b>INFORMATION FOR PRIVATE HOUSEHOLDS</b> .....	<b>15</b>



# Package Contents

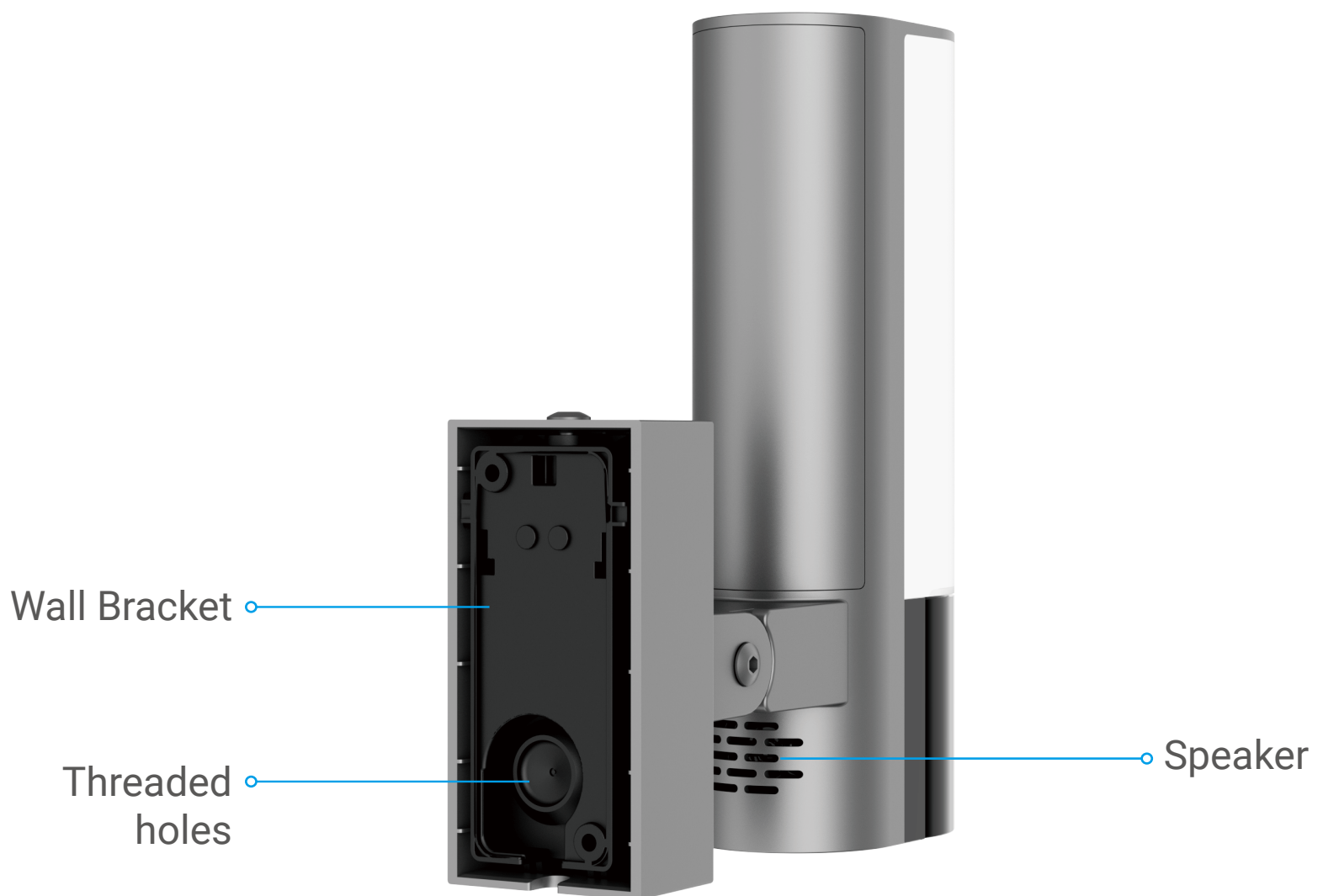
NO.	Part Name	Quantity	Image
1	Security Camera	x1	
2	Drill Template	x1	
3	L-shaped Wrench	x1	
4	Wall Bracket	x1	
5	Bracket Screw	x1	
6	Buckle	x1	
7	Screw Kit	x1	
8	Regulatory Information	x1	
9	Quick Start Guide	x1	

# Basics



Name	Description
LED Indicator	Solid Red: Camera starting up.
	Slow-flashing Red: Network exception.
	Fast-flashing Red: Camera exception (e.g. Micro SD card error).
	Solid Blue: Video being viewed in the EZVIZ app.
	Fast-flashing Blue: Camera ready for Wi-Fi connection.
	Slow-Flashing Blue: Camera running properly.
Camera Module	The camera module can be rotated 50 degrees left and right.
Adjustment Screw	Loosen the adjustment screw and tilt down the camera up to 55°. Tighten the adjustment screw when you have the camera in the position you want.
Micro SD Card (sold separately)	Initialize the card in the EZVIZ app before using it. Recommended compatibility: Class 10, maximum space 512GB.

RESET Button	Press and hold the button for 4 seconds to restart and set all parameters to default.
--------------	---------------------------------------------------------------------------------------



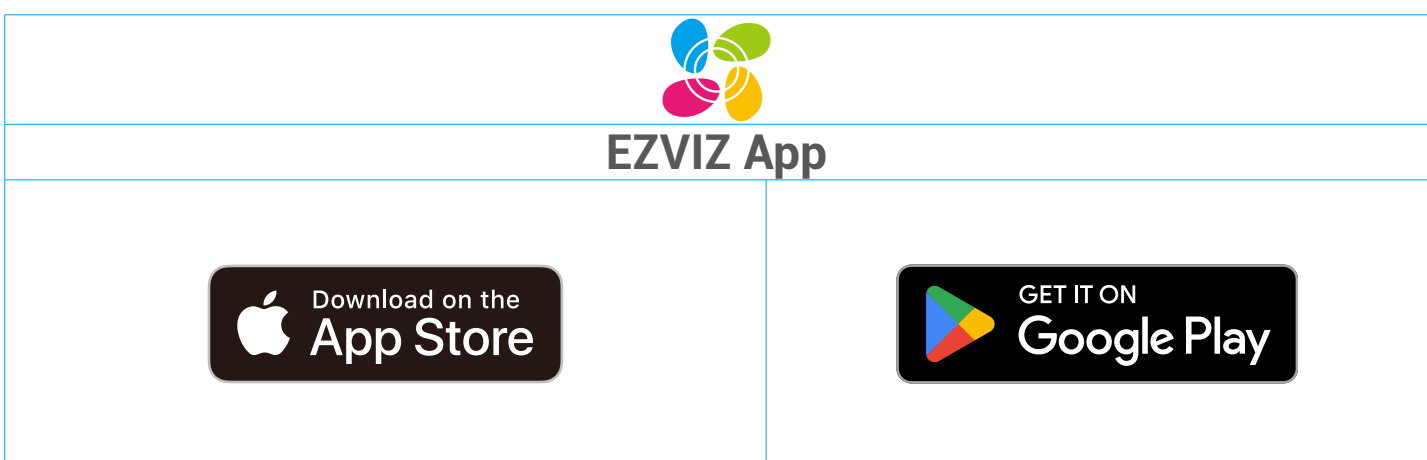
## Setup

Follow the steps to set your camera:

1. Get the EZVIZ app, and log in to your EZVIZ app account.
2. Install and power on your camera.
3. Add your camera to your EZVIZ account.

### 1. Get the EZVIZ App

1. Connect your mobile phone to Wi-Fi (suggested).
2. Download and install the EZVIZ app by searching “EZVIZ” in the App Store or Google Play™.
3. Launch the app and register an EZVIZ user account.



If you have already used the app, please make sure that it is the latest version. To find out if an update is available, go to the app store and search for EZVIZ.

## Tools you may need:



Electric drill with a  $\phi 6\text{mm}$  drill bit (x1)



Screwdriver (x1)

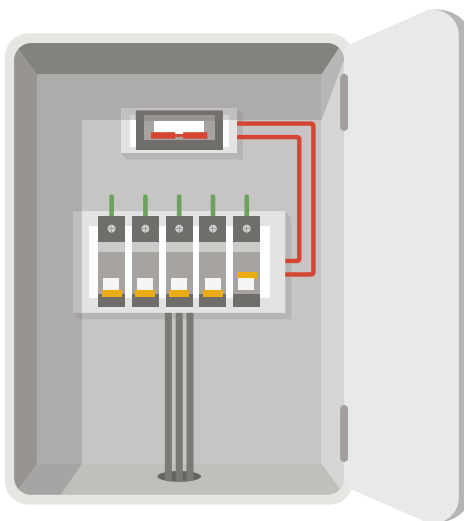


Rule (x1)

## 2. Shut off the Electricity at the Breaker



- Install the device involves high-voltage wiring. Check local codes and laws before installing. If self-installation is not permitted or you're uncertain about your skills, please consult a licensed electrician.
- If you don't know where your breaker is or how to turn off power, please consult with a licensed electrician.
- Keep the breaker off at any time during the installation process.



## 3. Install Micro SD Card (Optional)

1. Remove the cover at the bottom of the camera by unscrew the 2 screws.
2. Insert a Micro SD card (sold separately) into the card slot as shown in the figure below.



After installing the Micro SD card, you should initialize the card in the EZVIZ app before using it.

3. After adding the device to your EZVIZ app account, tap the Record List in the Device Settings interface to check the SD card status.
4. If the memory card status displays as Uninitialized, tap to initialize it.

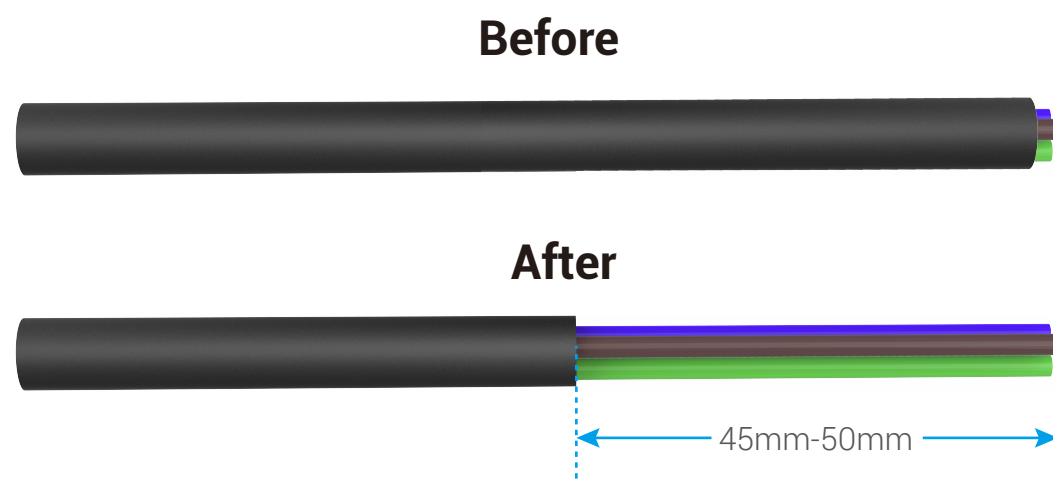


The status will then change to Normal and it can store videos.

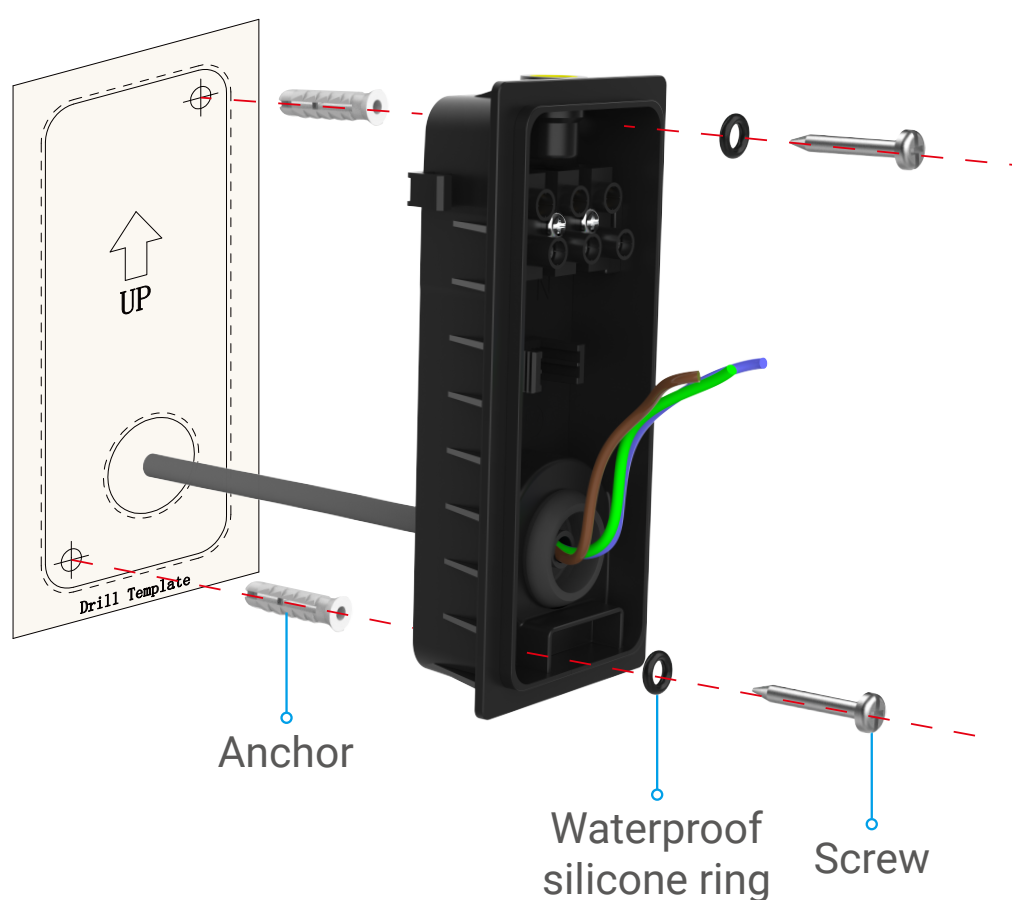
## 4. Install the Wall Bracket

**i** Choose a location with a clear, unblocked field of view and with a good wireless signal to the camera. Please keep the following tips in mind:

- Make sure the wall is strong enough to withstand three times the weight of the camera.
- Recommended installation height: **6.6-9.8 ft (2-3 m)** above the ground.
- It is recommended to use a wire stripper to strip the wire from the wall in advance, leaving the live wire, neutral wire, and ground wire exposed to a length of 45mm to 50mm.




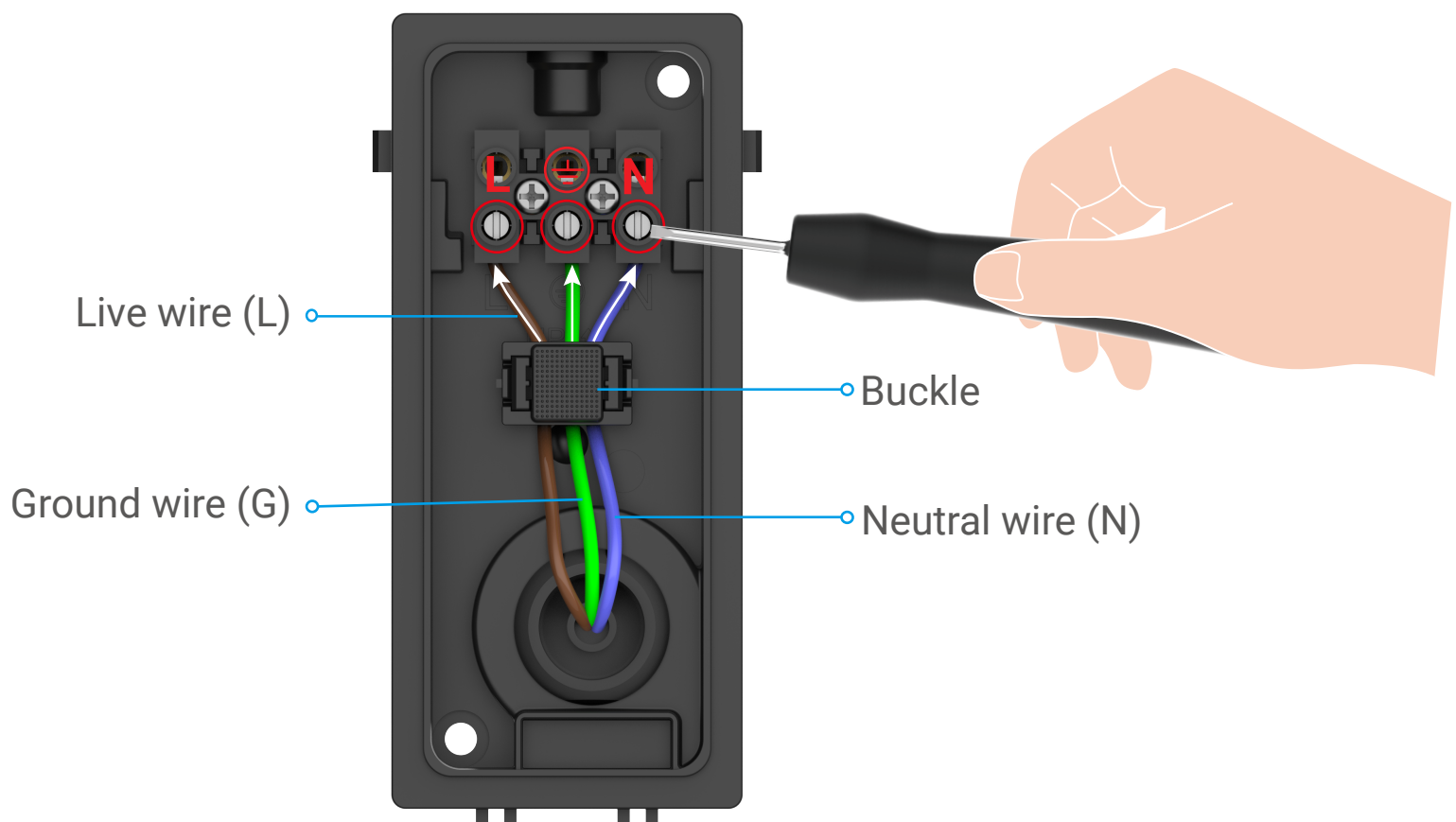
1. Place drill template onto the surface you have chosen to mount the camera.
2. (For cement wall only) Drill screw holes (using a electric drill with a **φ6mm** drill bit) according to the template and insert anchors.
3. Take the wires from the wall through the drill template and the rubber of the wall bracket.
4. Fix the wall bracket to the wall with waterproof silicone ring and screws.



## 5. Connect the Wires

1. Loosen the 3 screws in the wall bracket.
2. Attach the neutral wire (N) , live wire (L) and ground wire(G) from your wall to N, L, and  $\ominus$  port of the wall bracket respectively.
3. Tighten the 3 screws using screwdriver.
4. Install the buckle to secure the wires.

 Please make sure all the wires have been well connected before installing the buckle.

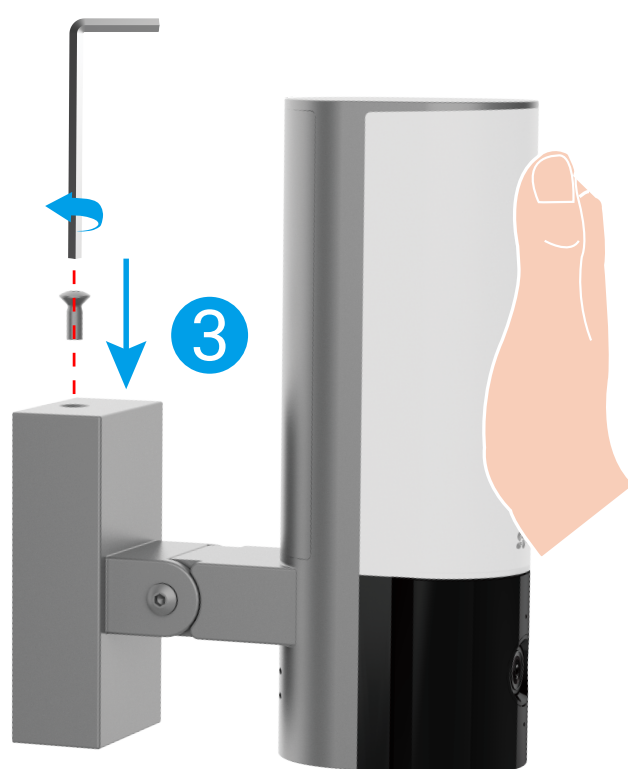
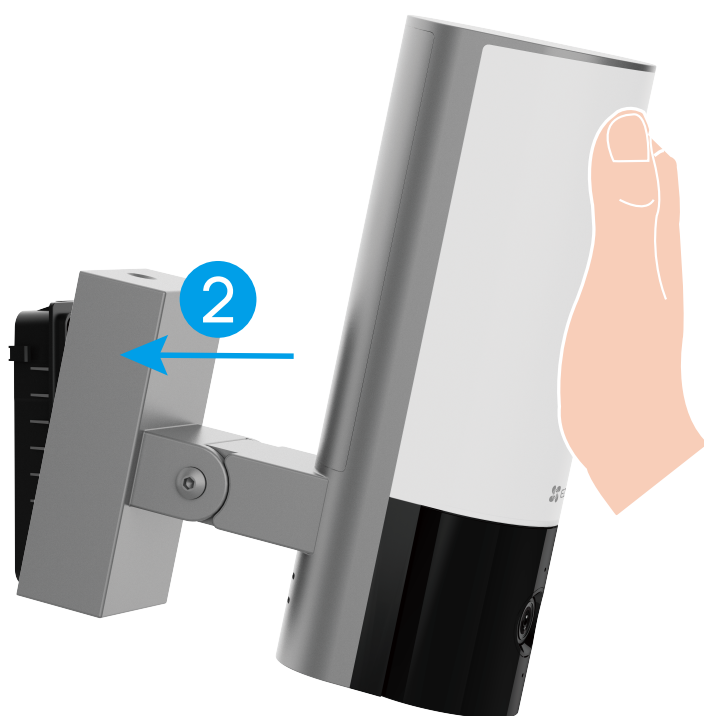
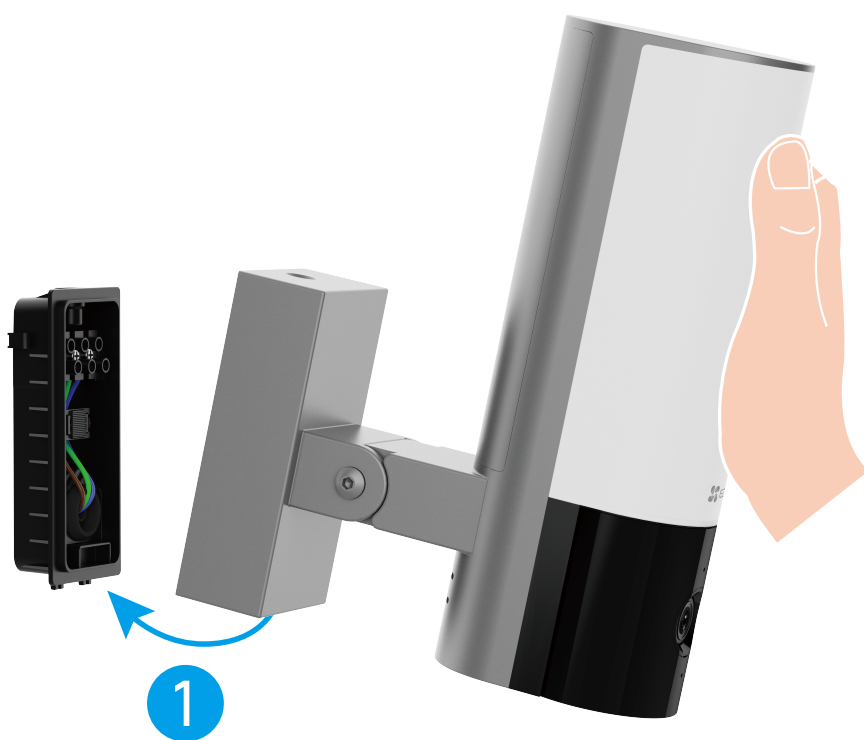




## 6. Install the Camera to the Wall Bracket

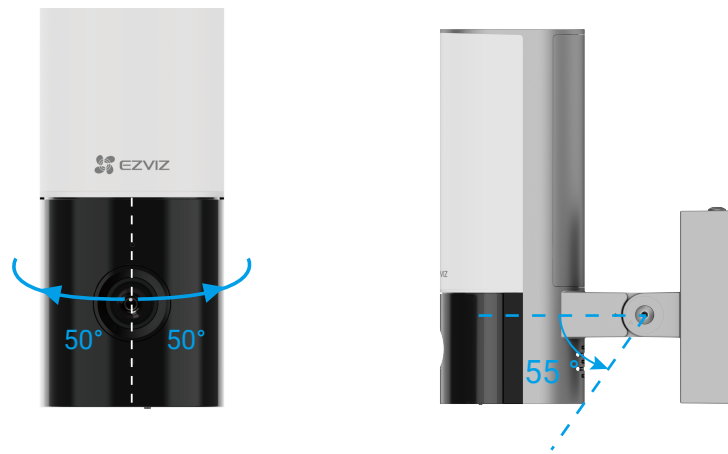
**i** Hold the camera at any time during the installation.

1. Buckle the bottom of the camera into the wall bracket.
2. Press the wall bracket and camera together, until you hear a click.
3. Tighten the bracket screw with L-shaped wrench (included in the package) to secure the camera.

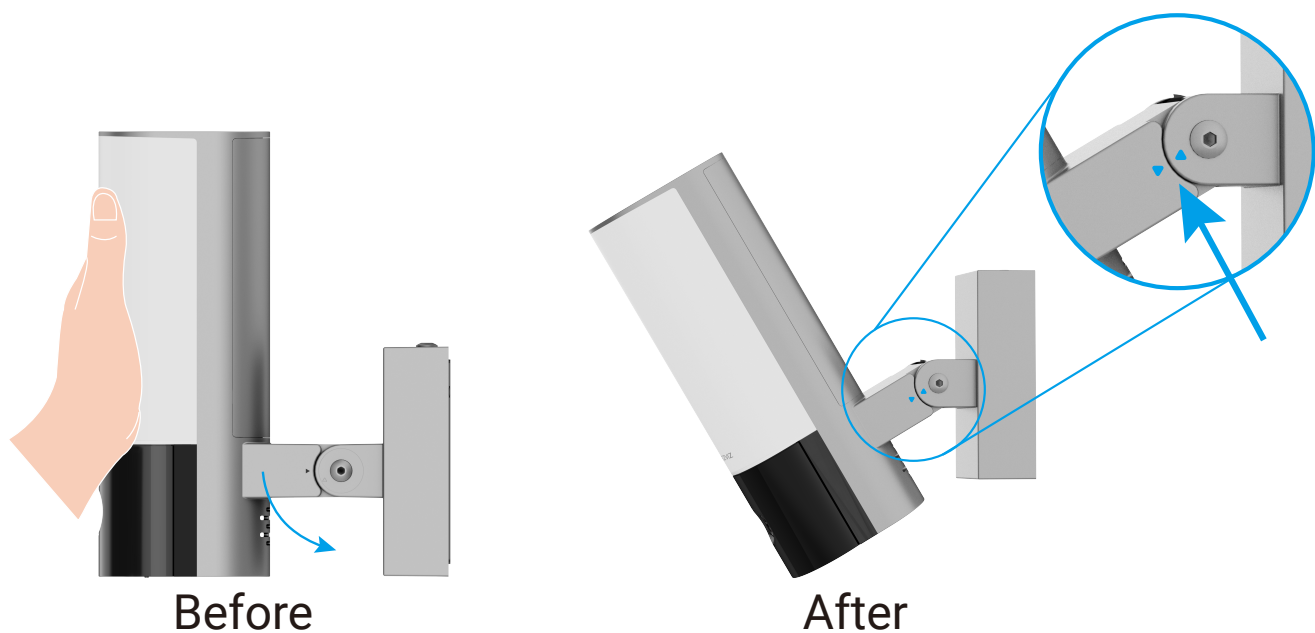


## 7. Adjust Camera Angle

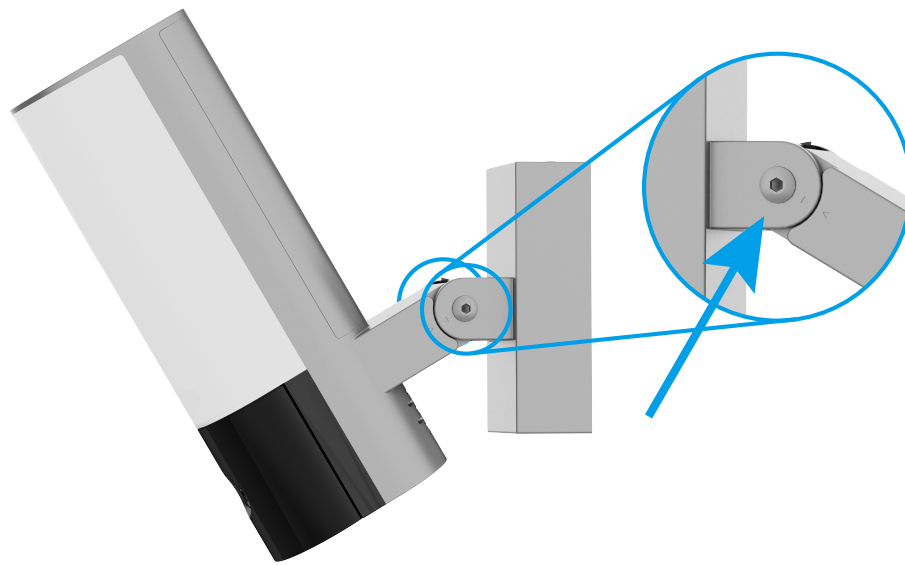
You can adjust the horizontal (100 degrees) and vertical (55 degrees) angle of the camera module as needed.



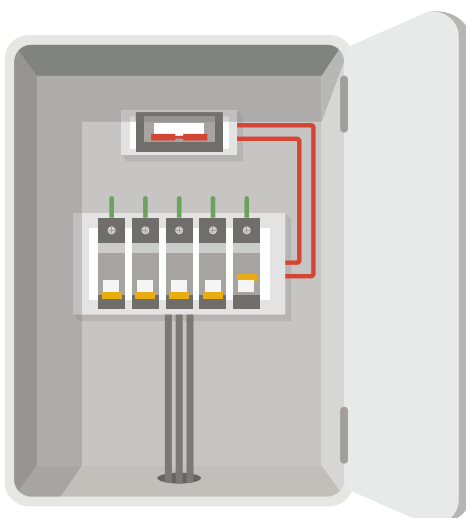
- Recommended vertical angle: Tilt down 30 degrees, operate the camera as shown in the figure below.



- After adjust the camera angle, tighten the 2 screws beside the camera.



## 8. Restore Power at the Breaker





- Q: How to confirm if the camera has power?
- A: After restoring power, the camera will be ready for setup when the light is on and the LED Indicator on the front of the camera fast flashes blue.



## 9. Add camera to EZVIZ App

1. When the LED indicator flashes blue quickly, indicates that the camera is ready for Wi-Fi configuration.
2. Log in to your account using the EZVIZ app.
3. On the Home screen, tap “+” on the upper-right corner to go to the Scan QR Code interface.
4. Scan the QR code on the Quick Start Guide cover or on the body of the camera.



5. Follow the EZVIZ app wizard to finish Wi-Fi configuration.



If you want to change your camera's Wi-Fi, press and hold the RESET button for 4s and repeat the steps above.

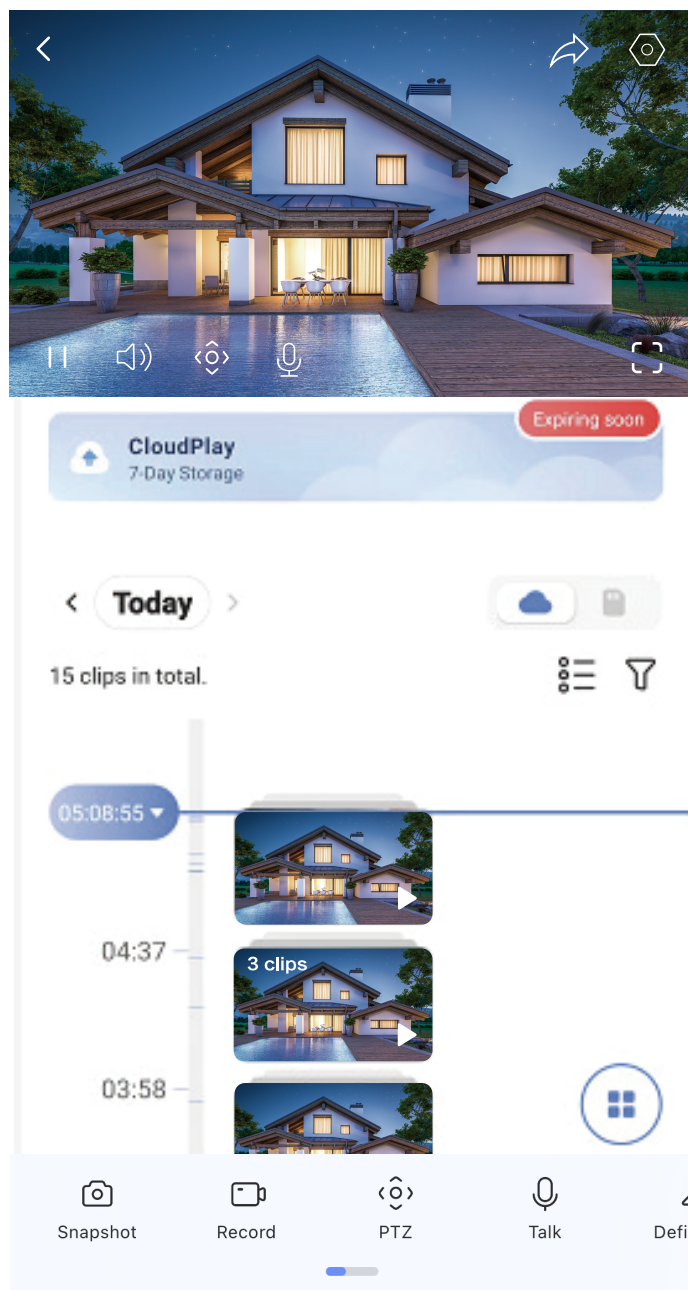
# View Your Device

**i** The app interface may change due to version update. Please refer to the actual interface.

## 1. Live View

When you launch the EZVIZ app, the device page displays as shown below.

You can view and listen to a live feed, take snapshots or recordings, and choose video definition as needed.



**i** Swipe left and right across the screen to see more icons.

Icon	Description
	Share. Share your device with anyone you want.
	Settings. View or change the device settings.
	Picture in Picture. You can select to see the pictures taken simultaneously by two lens in the live view.
	Snapshot. Take a snapshot.
	Record. Manually start/stop recording.
	PTZ: Pan/Tilt/Zoom. Rotate the camera to get broader field of view.
	360 Picture. Click to generate a panoramic image.
	Alarm. Sound or flash to deter intruders.
	Floodlight. Tap to lighten the field of view.
	Talk. Tap the icon, and then follow the on-screen instructions to talk to or listen to people in front of the camera.
	Sleep. Tap to enter sleep mode, the video will stop displaying and the alarm notification will be turned off.
	Definition. Select video resolution as you needed.
	Nearby Device. Tap to check available devices nearby.

## 2. Settings

In the settings page, you can set the parameters of the device.

Parameter	Description
Name	Customize the name of your device.
Intelligent Detection	You can select between different detection types for your device.
Notification	You can manage the device message and EZVIZ app notification.
Audio Settings	You can set relevant audio parameters for your device.
Image Settings	You can set relevant image parameters for your device.
Light Settings	You can set relevant light parameters for your device.
PTZ Settings	You can set parameters of PTZ for your device.
CloudPlay	<p>You can subscribe and manage the cloud storage.</p> <ul style="list-style-type: none"><li>• <a href="#">The function is only available in certain countries. Please verify the availability in your country before purchasing.</a></li><li>• <a href="#">The producer reserves the right of final explanation.</a></li></ul>
Record List	You can see micro SD card capacity, and also you can enable or disable cloud storage service here.
Privacy Settings	You can encrypt your videos with encryption password.
Network Settings	You can see the connection status.
Device Information	You can see the device information here.
Share Device	You can share the device to you family members or guests.
Restart Device	Tap to restart the device.
Delete Device	Tap to delete the device from EZVIZ app.



# EZVIZ Connect

## 1. Use Amazon Alexa

These instructions will enable you to control your EZVIZ devices with Amazon Alexa. If you run into any difficulties during the process, please refer to **Troubleshooting**.

**Before you start, make sure that:**

1. EZVIZ devices are connected to the EZVIZ app.
2. In the EZVIZ app, turn off the "Image Encryption" in the Device Settings page.
3. You have an Alexa-enabled device (i.e Echo Spot, Echo-Show, All-new Echo-Show, Fire TV (all generations), Fire TV stick (second generation only), or Fire TV Edition smart TVs).
4. The Amazon Alexa app is already installed on your smart device, and you have created an account.


**To Control EZVIZ devices with Amazon Alexa:**

1. Open the Alexa app and select "Skills and Games" from the menu.
2. On the Skills and Games screen, search for "EZVIZ", and you will find "EZVIZ" skills.
3. Select your EZVIZ device's skill, then tap **ENABLE TO USE**.
4. Enter your EZVIZ username and password, and tap **Sign in**.
5. Tap the **Authorize** button to authorize Alexa to access your EZVIZ account, so that Alexa can control your EZVIZ devices.
6. You will see "EZVIZ has been successfully linked", then tap **DISCOVER DEVICES** to allow Alexa to discover all your EZVIZ devices.
7. Go back to Alexa app menu and select "Devices", and under devices you will see all your EZVIZ devices.

### Voice Command

Discover a new smart device via the "Smart Home" menu in the Alexa app or the Alexa Voice Control function.

Once the device is found, you can control it with your voice. Speak simple commands to Alexa.

-  Your device's name for example: "show xxxx camera," can be modified in the EZVIZ app. Every time you change the name of the device, you will need to discover the device again to update the name.

### Troubleshooting

#### What do I do if Alexa fails to discover my device?


Check if there are any Internet connecting problems.

Try to reboot the smart device and re-discover the device on Alexa.

#### Why does the device's status show "Offline" on Alexa?

Your wireless connection might have been disconnected. Reboot the smart device and re-discover on Alexa.

Internet access on your router could be unavailable. Check if your router is connected to the Internet and try again.

-  For details about countries that support the using of Amazon Alexa, see its official website.



## 2. Use Google Assistant

With the Google Assistant, you can activate your EZVIZ device and watch live by speaking Google Assistant voice commands.

**The following devices and apps are required:**

1. A functional EZVIZ app.
2. In the EZVIZ app, turn off the "Image Encryption" and turn on the "Audio" in the Device Settings page.
3. A TV with functional Chromecast connecting to it.
4. The Google Assistant app on your phone.

**To get started, follow the steps below:**

1. Set up the EZVIZ device and make sure it works properly on the app.
2. Download the Google Home app from the App Store or Google Play Store™ and log into your Google account.
3. On the Myhome screen, tap "+" on the upper-left corner, and select "Set up device" from the menu list to go to the Set up interface.
4. Tap **Works with Google**, and search for "EZVIZ", where you will find "EZVIZ" skills.
5. Enter your EZVIZ username and password, and tap **Sign in**.
6. Tap the **Authorize** button to authorize Google to access your EZVIZ account, so that Google can control your EZVIZ devices.
7. Tap **Return to app**.
8. Follow the above steps to complete the authorization. When synchronization is completed, EZVIZ service will be listed under your list of services. To see a list of compatible devices under your EZVIZ account, tap on the EZVIZ service icon.
9. Now try some commands. Use the name of the camera that you created when you set up the system.

Users can manage devices as a single entity or in a group. Adding devices to a room allows users to control a group of devices at the same time using one command.

See the link for more information:

<https://support.google.com/googlehome/answer/7029485?co=GENIE.Platform%3DAndroid&hl=en>

# Initiatives on the Use of Video Products

Dear Valued EZVIZ Users,

Technology affects every aspect of our life. As a forward-looking tech company, we are increasingly aware of the role technology plays in improving efficiency and quality of our life. At the same time, we are also aware of the potential harm of its improper usage. For example, video products can record real, complete and clear images, therefore they hold great values in representing facts. Nevertheless, improper distribution, use and/or processing of video records may infringe on the privacy, legitimate rights and interests of others.

Committed to innovating technology for the good, we at EZVIZ hereby earnestly advocate that every user shall use video products properly and responsibly, thus to collectively create a positive environment where all related practices and usage comply with applicable laws and regulations, respect individuals' interests and rights, and promote social morality.

Here are EZVIZ's initiatives that we'd appreciate your attention:

1. Each individual possesses a reasonable expectation of privacy, and the use of video products should not be in conflict with such reasonable expectation. Therefore, a warning notice which clarifies the monitoring range should be displayed in a reasonable and effective manner, when installing video products in public areas. For non-public areas, the rights and interests of people involved shall be evaluated thoughtfully, including but not limited to, installing video products only after obtaining the consent of the stakeholders, and not installing highly-invisible video products without other's knowledge.
2. Video products objectively records footage of real activities within specific time and space. Users shall reasonably identify the people and rights involved in this scope in advance, to avoid any infringement of portrait, privacy or other legal rights of others while protecting themselves through video products. Notably, if you choose to enable the audio recording function on your camera, it will capture sounds, including conversations, within the monitoring range. We highly recommend a comprehensive assessment on the potential sound sources in the monitoring range, so as to fully understand the necessity and the reasonableness before you turn on the audio recording function.
3. Video products in use will consistently generate audio or visual data from real scenes –possibly including biometric information such as facial images – based on the user's selection of product features. Such data can be used or processed to use. Video products are only technological tools that do not and cannot humanly practice legal and moral standards to guide lawful and proper use of data. It is the methods and purposes of the people who control and use the generated data that make a difference. Therefore, data controllers shall not only strictly abide by applicable laws and regulations, but also fully respect non-obligatory rules including international conventions, moral standards, cultural norms, public order and local customs. Furthermore, we should always prioritize the protection of privacy and portrait rights, and other reasonable interests.
4. The video data continuously generated by video products carries the rights, values and other demands of various stakeholders. Thus, it is extremely crucial to ensure data security and shield the products from malicious intrusions. Every user and data controller shall, undertake all reasonable and necessary measures to maximize product and data security, avoiding data leakage, improper disclosure or misuse, including but not limited to, setting up access control, selecting a suitable network environment where video products are connected, establishing and constantly optimizing network security.
5. Video products have made great contributions to enhance the safety of our society, and we believe that they will continue to play a positive role in various aspects of our daily life. Any attempt to abuse these products to violate human rights or engage in unlawful activities contradicts the very essence of the value in tech innovation and product development. We encourage every user to establish your own methods and rules to evaluate and monitor the use of video products, so as to ensure that these products are always used properly, thoughtfully and with goodwill.

# INFORMATION FOR PRIVATE HOUSEHOLDS

1. Separate collection of waste equipment: Electrical and electronic equipment that has become waste is referred to as waste equipment. Owners of waste equipment must dispose of it separately from unsorted municipal waste. In particular, waste equipment does not belong in household waste, but in special collection and return systems.

2. Batteries and rechargeable batteries as well as lamps: Owners of waste equipment shall, as a rule, separate waste batteries and rechargeable batteries that are not enclosed in the waste equipment, which can be removed from the waste equipment without being destroyed, from the waste equipment before handing them in at a collection point. This does not apply if waste equipment is prepared for reuse with the participation of a public waste management authority.

3. Options for returning waste equipment: Owners of waste equipment from private households can return it free of charge to the collection points of the public waste management authorities or to the take-back points set up by manufacturers or distributors within the meaning of the Electrical and Electronics Equipment Law. Stores with a sales area of at least 400 m<sup>2</sup> for electrical and electronic equipment and those grocery stores with a total sales area of at least 800 m<sup>2</sup> that offer electrical and electronic equipment several times a year or on a permanent basis and make it available in the market are required to take it back. This also applies in the case of distribution using means of distance communication, if the storage and shipping areas for electrical and electronic equipment are at least 400 m<sup>2</sup> or the total storage and shipping areas are at least 800 m<sup>2</sup>. Distributors shall, in principle, ensure take-back by providing suitable return facilities at a reasonable distance from the respective end user. The possibility of returning waste equipment free of charge exists for distributors who are obliged to take it back, among other things, if a new similar device that essentially fulfills the same functions is delivered to an end user.

4. Privacy Notice: Waste equipment often contains sensitive personal data. This applies in particular to devices of information and telecommunications technology such as computers and smartphones. In your own interest, please note that each end user is responsible for deleting the data on the waste equipment to be disposed of.

5. Meaning of the symbol “crossed-out wheelie bin”: The symbol of a crossed-out wheelie bin regularly depicted on electrical and electronic equipment indicates that the respective device is to be collected separately from unsorted municipal waste at the end of its service life.